

FC-500



Ruggedized Field Controller



- Large Sunlight Readable Display
- MIL-STD 810G and IP68 Certified
- 1GHz Processor
- 5 MP Camera
- 3.5G Cellular Module
- Internal GPS 2-5m Accuracy

FC-500 Ruggedized Field Controller

FC-500 Field Controller

The Topcon FC-500 data controller is designed for the construction, mapping and survey professional operating Topcon MAGNET® or Pocket 3D and works with all Topcon GNSS receivers and total stations. The FC-500 has an optional 3.5G cellular modem that provides access to MAGNET Enterprise and Sitelink3D for sending and receiving data files and staying connected.

The FC-500 includes a capacitive touchscreen, similar to many of the smartphones used every day. The display surface is also extremely scratch-resistant, and much more pierce resistant to sharp objects compared with other resistive displays in other products.

With the FC-500's internal "intelligent" batteries, there is no worry of ever overcharging. Typical battery life is tested to 20 hours with excellent performance under extreme conditions. Recharging is fast and gets to a 50 percent charge in as little as an hour.

The FC-500's external ports are located at the base of the unit: USB Host, USB client micro, power, and audio. The USB Host A is easily used in the field where you can quickly copy a large job, coordinate or DXF file to the FC-500. The DB9 serial port is perfect for older total stations that still require a cable.

Rotates from "portrait" to "landscape"

With a single key touch, the user can change the orientation of the screen from "portrait" to "landscape" to increase visibility when viewing maps or drawings.



Built to Survive

In addition to IP68 certification, the FC-500 is independently certified to MIL-STD 810G standard, and can operate in temperatures from -30°C to 60°C.



Fast 1GHz processor

Windows Mobile® 6.5 provides a modern operating environment and expandability with other software applications. The 1GHz processor drives any Topcon field software with ease.



Built-in 5 MP camera

A 5 MP auto focus camera with LED flash comes as standard equipment. Store hundreds of photos on the built-in 8GB's of flash storage, and easily transfer data to a computer or USB stick.



Cellular Modem (optional)

The optional internal cellular modem is a global device capable of data communication with Topcon MAGNET products to send and receive data to the MAGNET cloud, making it easy to communicate with the field.



PRIMARY FEATURES

Large 4.3 in. Sunlight
Readable Display

3.5G Cellular Module
Internal GPS

1GHz Processor
512MB RAM
8GB Flash Storage

Built-in *Bluetooth*[®]
WiFi Connectivity

MIL-STD 810G
IP68 Certified

6 control buttons
4-way Directional Arrow Key

USB Host (Full Type A)
USB Client (Micro Port)
9-pin Serial Port

Built-in 5 MP Camera



Sunlight Readable Display

The FC-500 features a 4.3 in. display designed for viewing in direct sunlight. The display uses a one-touch interface that is optically bonded to increase visibility.



KIT COMPONENTS

Included Accessories

- Battery and Charger
- International Plug Kit
- USB Cable
- Quick Start Guide
- Hand Strap
- Screwdriver
- Stylus



SPECIFICATIONS

Hardware

Processor	1GHz ARM Cortex A8 i.MX53
Operating System	Microsoft® Windows Embedded Handheld 6.5
Memory and Data Storage	512MB RAM 8GB flash storage User Accessible Micro-USB
Camera (Geo, Geo 3G):	5 MP resolution with autofocus and LED flash with video capture
Power	12/24VDC power input jack Intelligent Li-Ion battery 3.6VDC at 10600mAh

Communication

Ports	COM1, RS-232C 9-pin D connector with 5VDC power on ring indicator, USB Host (Full A), USB Client (Micro)
Wireless Connectivity	Bluetooth® Wi-Fi 802.11b/g/n
Cellular Connectivity (Geo 3G only)	Integrated Worldwide, 800/850, 900, 1800, 1900, 2100 MHz, UMTS/HSPA+

For more specifications information:
www.topcon-positioning.eu

Topcon TotalCare

This online resource comes with real live people ready to help. Get expert training from Topcon University's large collection of online materials, and expert help directly from Topcon Technical Support.

Access software and firmware updates, current publications, and guidance from the experts at Topcon all right from your computer or mobile device.

Please visit the TotalCare website to learn more.
topcontotalcare.com



Topcon Europe Positioning, B.V. • Essebaan 11
• 2908 LJ - Capelle a/d IJssel • The Netherlands
(+31) 10 4585077

Specifications subject to change without notice. ©2014 Topcon Corporation
All rights reserved. T537EN Rev. A TF

The Bluetooth® word mark and logos are registered trademarks owned by Bluetooth SIG, Inc. and any use of such marks by Topcon is under license. Other trademarks and trade names are those of their respective owners.

SOFTWARE

MAGNET

A family of software solutions that streamlines the workflow for surveyors, contractors, engineers and mapping professionals.

MAGNET® Field Layout

MAGNET Field Layout is a customized version of MAGNET Field that increases building layout productivity. With in-the-field plans and dimensional entry, you can go from paper plan to building layout faster than ever.



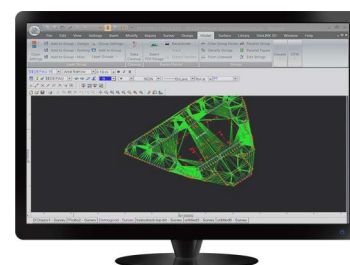
MAGNET® Enterprise

MAGNET Enterprise is a web browser-based environment that simplifies managing field and office data in the cloud. Track assets and communicate with everyone involved on your projects. Log in from any browser for live updates. Save time and collaborate.



MAGNET® Office

Full CAD functionality with MAGNET Office Site and Topo or field data processing with MAGNET Office Tools inside AutoCAD® products, like Civil3D®. The MAGNET Office solution has what you need.



Your local Authorized Topcon dealer is:

Гост применим к геодезическому оборудованию и приборам.